

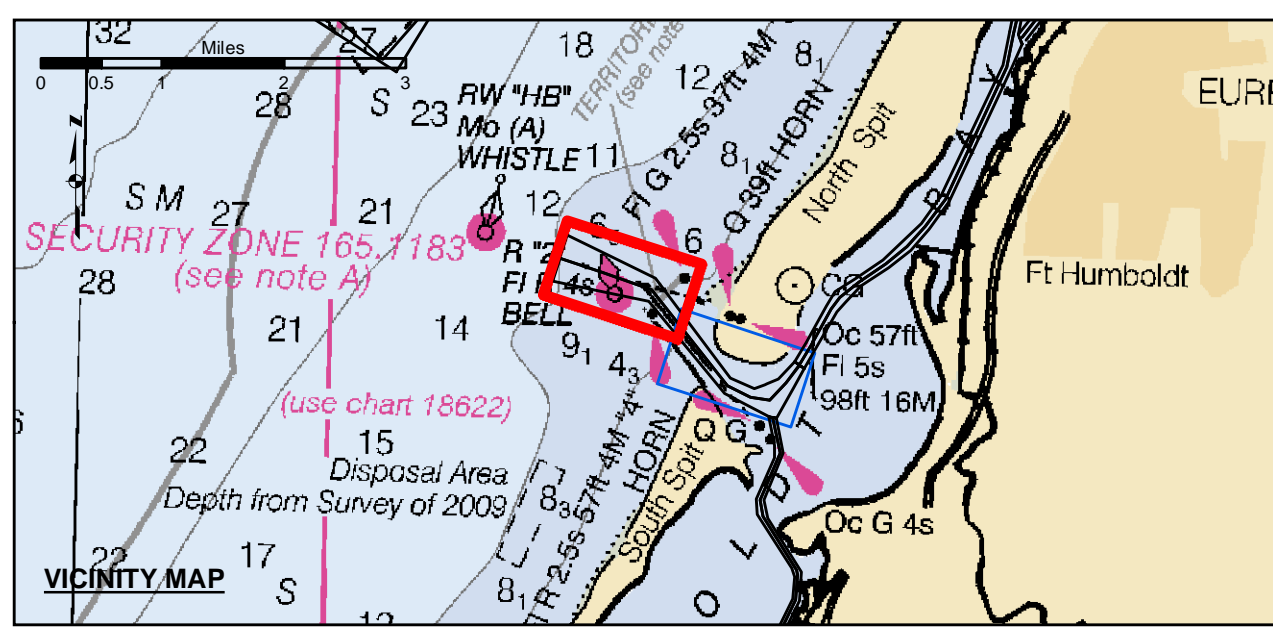
PRELIMINARY ISSUE
THIS PLAN ISSUED FOR
ADVANCE INFORMATION ONLY

NAD 83
CENTERLINE ANGLE POINTS
HUMBOLDT BAY
(BAR & ENTRANCE)

PT	X	Y
C1	5936273.49	2172157.43
C2	5938147.59	2171508.43
C3	5940265.09	2170773.43
C4	5943553.39	2166602.43
C5	5944545.29	2166122.43
C6	5945376.39	2165957.23
C7	5946085.69	2166728.23
C8	5946886.99	2168508.33
C9	5947166.09	2168359.43
C10	5948049.99	2169917.43
C11	5948433.89	2170455.43
C12	5949233.79	2171119.43
C13	5950417.39	2171891.43
C14	5951329.29	2172656.43
C15	5952138.39	2173530.43
C16	5952999.89	2174706.43
C17	5953711.89	2180611.43
C18	5956236.79	2183159.43
C19	5957823.09	2186978.43
C20	5958152.59	2187513.43
C21	5958681.79	2187878.43
C22	5959281.79	2188078.43
C23	5959581.79	2189078.43

NAD 83
CHANNEL ANGLE POINTS
HUMBOLDT BAY (BAR & ENTRANCE)

PT	X	Y	PT	X	Y
1	5936596.69	2173163.63	24	5959081.79	2187578.43
2	5938385.39	2172268.83	25	5958421.69	2187381.23
3	5940404.09	2171259.93	26	5958007.99	2186903.83
4	5943666.09	2169944.43	27	5958425.99	2183903.63
5	5944727.49	2168468.93	28	5958165.59	2181942.63
6	5945239.99	2166690.33	29	5958348.69	2181424.83
7	5945752.59	2165911.73	30	5958566.99	2180383.43
8	5946464.09	2165131.33	31	5958165.09	2178504.63
9	5946953.59	2164791.53	32	5958200.39	2178413.53
10	5947831.69	2170042.13	33	5958156.79	2172459.53
11	5949193.09	2170679.33	34	5958526.69	2171724.13
12	5949124.59	2171287.03	35	5949343.09	2170952.03
13	5950308.09	2172059.13	36	5948674.79	2170232.13
14	5951141.79	2172853.23	37	5948301.49	2169794.33
15	5951976.39	2173546.23	38	5947386.59	2169242.23
16	5952816.79	2174808.43	39	5946907.49	2168731.23
17	5953584.79	2180520.43	40	5946431.39	2168537.23
18	5954047.79	2183225.33	41	5945672.89	2165182.43
19	5956738.19	2187056.43	42	5945354.09	2162524.63
20	5957883.59	2187647.53	43	5944363.09	2162776.33
21	5958881.79	2188978.43	44	5943441.39	2162611.63
22	5959581.79	2189078.43	45	5943125.19	2172287.83
23	5959681.79	2188378.43	46	5937908.79	2170746.43
			47	5936950.29	2171151.43



Federal Navigation Channel	Beacon, General	Contours
Shoaling Area	Obstruction Point	-48
Placement Area	Navigation Buoy	-47
Anchorage Area	Navigation Buoy	-46
Wreck Area	Shoalest Sounding*	-45
Submerged Wreck		-44
Zone_I_Angle_Points		

NOTES:
DRAWINGS NOT TO BE USED AS NAVIGATION. ONLY CHANNEL CONDITION AT DATE OF SURVEY. THE LOCATION OF ALL NAVIGATION AIDS ARE BASED ON INFORMATION PROVIDED BY THE U.S. COAST GUARD. BUOY LOCATION REPRESENT THE POSITION OF THE SINKER ONLY.

SURVEYED BY THE CORPS OF ENGINEERS.

SOUNDINGS WERE TAKEN BY FATHOMETER AND ARE SHOWN TO THE NEAREST TENTHS OF A FOOT.

SOUNDINGS ARE BASED ON THE DATUM OF MEAN LOWER LOW WATER AT THE LOCALITY.

PLANE GRID AND COORDINATES ARE BASED ON THE STATE OF CALIFORNIA COORDINATE SYSTEM, LAMBERT CONFORMAL PROJECTION, ZONE 11 NAD 83, CALIFORNIA, AS DESCRIBED IN SPECIAL PUBLICATION NO. 235, PUBLISHED BY THE NATIONAL OCEAN SURVEY.

PROJECT DEPTHS ARE AS FOLLOWS:
BAR & ENTRANCE CHANNEL = 48 FEET
NORTH BAY, SAMOATO MILE 5.0 & = 38 FEET
EUREKA CHANNEL, FIELDS LANDING CHANNEL & MILE 5.0 TO "N" STREET = 26 FEET

1:00 INDICATES THE NUMBER AND BEGINNING OF A LINE OF SOUNDINGS.

SOUNDINGS ARE BASED ON TIDE GAUGES REFERENCED TO U.S.C. & G.S.

Vertical and Horizontal Control:
NOAA Station: 941 8767 - North Spit, CA

Benchmark:
NO 11 1340 (PID: LV0359)
MLW Elev: 4.251m

Tides:
RTK GPS, using GEOID12a and VDATUM
RTK elevations calibrated at 10.0ft nail at Coast Guard Station Humboldt Bay

Position:
RTK Positions

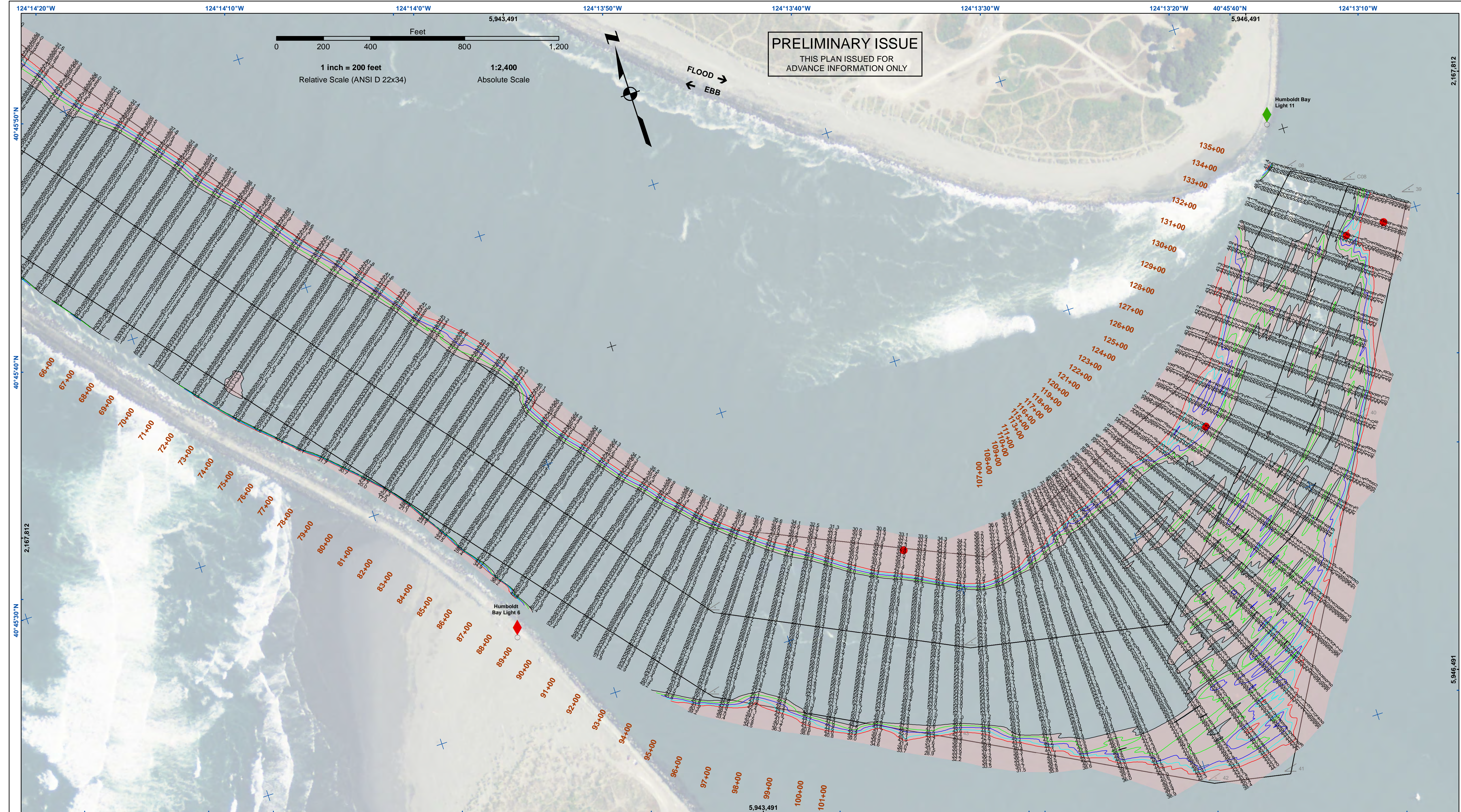
US Army Corps of Engineers
San Francisco District
450 Golden Gate Ave
San Francisco, CA 94102

DISCLAIMER
The United States Government furnishes this information as a service to the public. It is not intended to be used for any purpose other than that for which it was prepared. The United States Government makes no warranty, expressed or implied, concerning the accuracy, completeness, or reliability of the information. The user assumes all responsibility for the results of any use of this information. The user agrees to hold the United States Government harmless from any and all claims, damages, or liabilities, including reasonable attorneys' fees, arising from the use of this information. These data belong to the Government. Therefore the user agrees to hold the United States Government harmless from any and all claims, damages, or liabilities, including reasonable attorneys' fees, arising from the use of these data to others without also transferring this disclaimer.

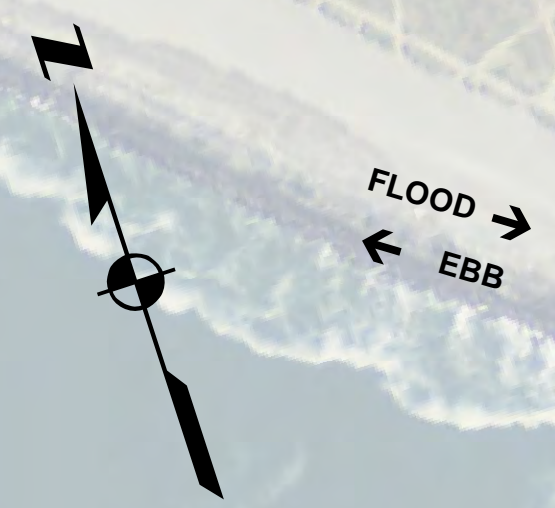
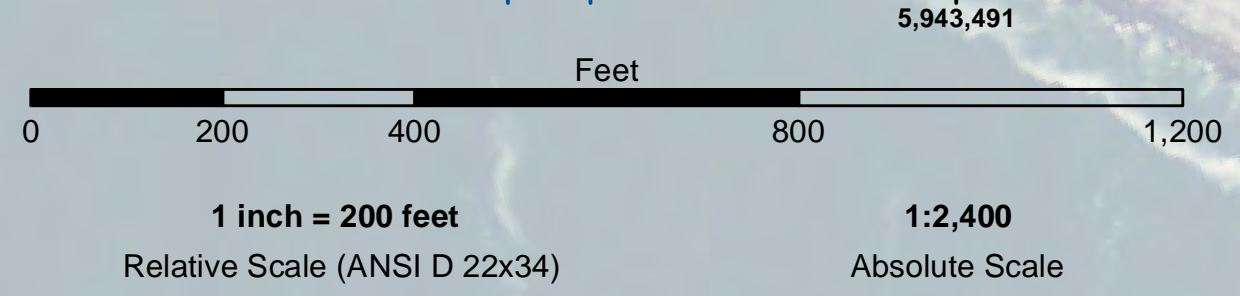
Prepared Under the Direction of JOHN D. CUNNINGHAM LT COLONEL, C.E. DISTRICT ENGINEER	Surveyed By:	Chart Date:
Submitted: Hydro Survey Team Leader	Plotted By:	Jun 16, 2021
Recommended: Chief, Hydro Survey Section	Checked By:	Designed by:
Approved: Chief, Construction Branch	Drawn by:	PDT

CALIFORNIA
HUMBOLDT COUNTY
**HUMBOLDT BAY
BAR & ENTRANCE CHANNEL
POST-DREDGE SURVEY**
12-14 JUNE 2021

**Sheet
Number
1 of 2**



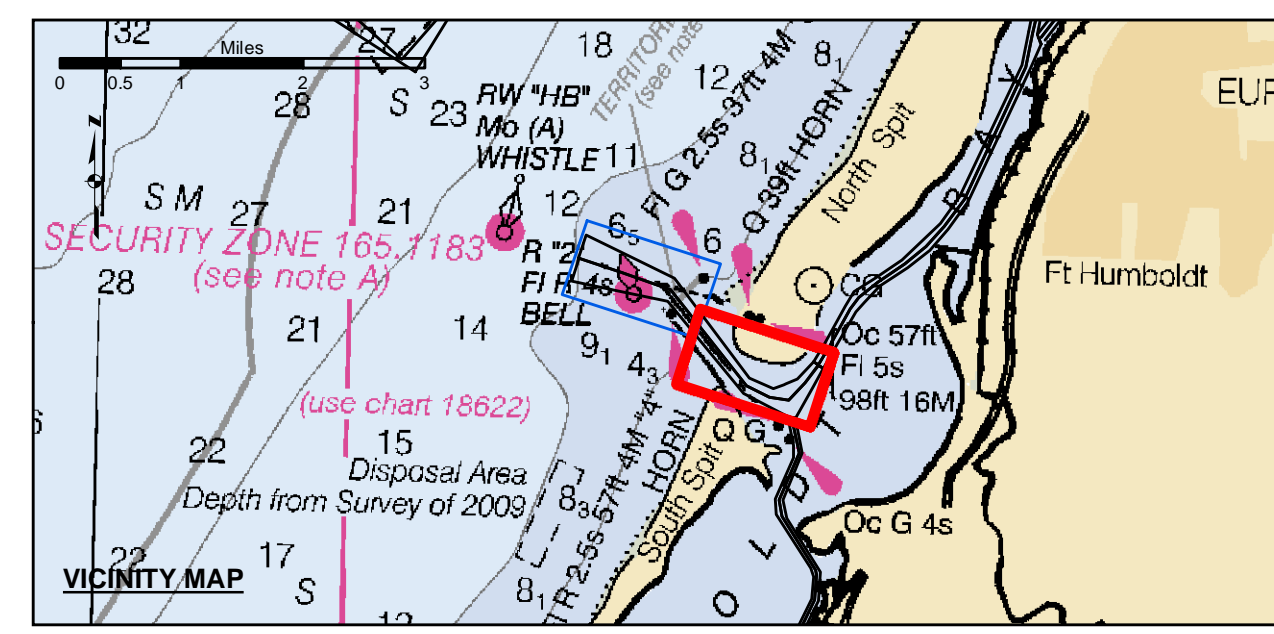
PRELIMINARY ISSUE
THIS PLAN ISSUED FOR
ADVANCE INFORMATION ONLY



US Army Corps of Engineers
San Francisco District
450 Golden Gate Ave
San Francisco, CA 94102

DISCLAIMER
The United States Government furnishes this information as a public service. It is not intended to be used for any purpose other than that for which it was prepared. The user assumes all liability for any use of this information. The United States Government makes no warranty, expressed or implied, concerning the accuracy, completeness, or timeliness of the information. The user is responsible for the results of any use of this information. The United States Government is not liable for any damages, including consequential damages, arising from the use of this information. These data belong to the Government. Therefore, the user may not transfer these data to others without also transferring this Disclaimer.

Prepared Under the Direction of JOHN D. CUNNINGHAM LT COLONEL, C.E., DISTRICT ENGINEER	Chart Date: Jun 16, 2021
Subject: Hydro Survey Team Leader	Designed by: PDT
Recommended: Chief, Hydro Survey Section	Plotted by: PDT
Approved: Chief, Construction Branch	Checked by: PDT
	Drawn by: PDT



Federal Navigation Channel	Beacon, General	Contours
Shoaling Area	Obstruction Point	-48
Placement Area	Navigation Buoy	-47
Anchorage Area	Navigation Buoy	-46
Wreck Area	Shoalest Sounding*	-45
Submerged Wreck		-44
Zone_I_Angle_Points		

NOTES:
DRAWINGS NOT TO BE USED AS NAVIGATION. ONLY CHANNEL CONDITION AT DATE OF SURVEY. THE LOCATION OF ALL NAVIGATION AIDS ARE BASED ON INFORMATION PROVIDED BY THE U.S. COAST GUARD. BUOY LOCATION REPRESENT THE POSITION OF THE SINKER ONLY.
SURVEYED BY THE CORPS OF ENGINEERS.
SOUNDINGS WERE TAKEN BY FATHOMETER AND ARE SHOWN TO THE NEAREST TENTHS OF A FOOT.
SOUNDINGS ARE BASED ON THE DATUM OF MEAN LOWER LOW WATER AT THE LOCALITY.
PLANE GRID AND COORDINATES ARE BASED ON THE STATE OF CALIFORNIA COORDINATE SYSTEM, LAMBERT CONFORMAL PROJECTION, ZONE 17NAD 83, CALIFORNIA, AS DESCRIBED IN SPECIAL PUBLICATION NO. 235, PUBLISHED BY THE NATIONAL OCEAN SURVEY.
PROJECT DEPTHS ARE AS FOLLOWS:
BAR & ENTRANCE CHANNEL = 48 FEET
NORTH BAY, SAMOATO MILE 5.0 & = 38 FEET
EUREKA CHANNEL, FIELDS LANDING CHANNEL & MILE 5.0 TO "N" STREET = 26 FEET

1:00 INDICATES THE NUMBER AND BEGINNING OF A LINE OF SOUNDINGS.
SOUNDINGS ARE BASED ON TIDE GAUGES REFERENCED TO U.S.C. & G.S.
Vertical and Horizontal Control:
NOAA Station: 941 8767 - North Spit, CA
Benchmark:
NO 11 1340 (PID: LV0359)
MLLW Elev: 4.251m
Title:
RTK GPS, using GEOID12a and VDATUM
RTK elevations calibrated at 10.0ft nail at Coast Guard Station Humboldt Bay
Position:
RTK Positions

CALIFORNIA
HUMBOLDT COUNTY
**HUMBOLDT BAY
BAR & ENTRANCE CHANNEL
POST-DREDGE SURVEY**
12-14 JUNE 2021

**Sheet
Number
2 of 2**